

**GTH™ -3013**

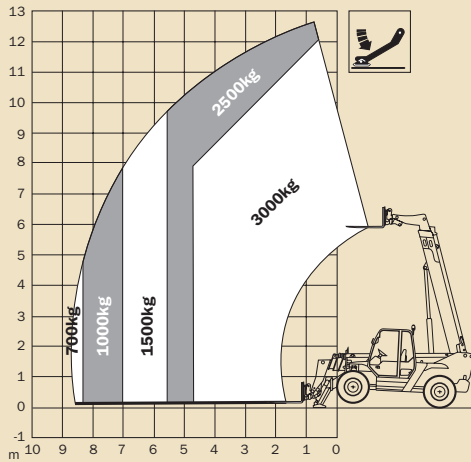
**Rough Terrain  
Telescopic Boom  
Material Handler**

With the performance  
and versatility you need



**Genie Australia**  
GENIE MEANS MORE THAN LIFTING

## Lift Capacity Chart Stabilisers Extended



### Standard Features

- 3,000 kg (6,613lbs) lift capacity (max.)
- 12.6 m (41ft 8in) lifting height (max.)
- 8.74 m (28ft 10in) forward reach (max.)
- 360° visibility over the lowered boom
- Four-wheel drive
- Three steering modes: front wheel steer, crab steer and coordinated steer
- Oscillating rear axle
- Front hydraulic outriggers
- Chassis levelling on front axle (+or-8°)
- Limited slip differential
- Closed loop hydrostatic drive for smooth and precise positioning
- Multi function – electroproportional joystick
- Brakes: multi-disc, oil immersed, self adjusting
- Power assisted steering
- Easy access to components for maintenance
- Floating forks
- Attachment holder plate with mechanical coupling
- Adjustable steering wheel
- Fully adjustable seat
- Lockable fuel tank
- Quick coupling of tools from cab
- Windshield protection grid

### Options and Accessories

- Air conditioning
- Spare wheel
- Loading shovels 500 litres
- Tyres and rims (405/70 – 24)
- Fixed hook on plate (max 3000kg)
- Forks side shift class 3 +/-100 mm (3000kg max)
- Jib 4m/900 kg
- Adjustable spotlights
- Loose material shovels 800 litres
- 4 in 1 buckets 900 litres

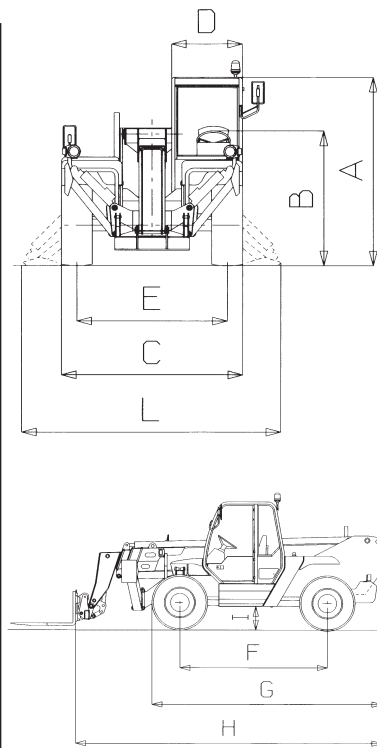
### Safety System

- Longitudinal stability control system with: visual display with coloured LEDs, audible alarm, automatic lockout of boom extension and lowering
- Lockout of stabilisers and chassis level with boom raised
- Protection against accidental manoeuvres

### Standard Compliance

- Operating cab, conforms to EEC directives 86/295 (ROPS) and 86/296 (FOPS)

(A)	Height: 2.49 m (8 ft 3 in)
(B)	Height at steering wheel: 1.92 m (6 ft 4 in)
(C)	Width: 2.33 m (7 ft 8 in)
(D)	Inside cab width: 0.91 m (3 ft)
(E)	Track: 1.92 m (6 ft 4 in)
(F)	Wheelbase: 2.85 m (9 ft 5 in)
(G)	Length at front wheels: 4.44 m (14 ft 8 in)
(H)	Length at fork-holder plate: 5.53 m (18 ft 3 in)
(I)	Ground clearance: 0.46 m (1 ft 6 in)
(L)	Overall width stabilisers extended: 2.93 m (9 ft 8 in)



### Specifications

	Metric	Imperial
Lift capacity (max.)	3,000 kg	6,613 lbs
Lift capacity at max. height	2,500 kg	5,511 lbs
Lift capacity at max. reach	700 kg	1,543 lbs
Fork holder plate rotation	145°	145°
Lifting speed	12 sec	12 sec
Lowering speed	10 sec	10 sec
Boom extension speed	16 sec	16 sec
Boom retraction speed	15 sec	15 sec
Inside turning radius	1.30	4 ft 6 in
Outside turning radius	3.99m	13 ft 1 in
Break-out force with 800 l shovel SAE J732/80	7,260 kg	16,000 lbs
Towing capacity at dynamometer	4,050 kg	8,929 lbs
Obstruction angle	39°	39°
Departure angle	27°	27°
Engine Type	Perkins diesel engine 57.5kw (78 hp) Perkins Turbo Diesel 74.4kw (101 hp)	
Maximum travel speed	30 km/h	19 mph
Gradeability (Unloaded)	40%	40%
(Full load)	25%	25%
Tank capacities		
Fuel	135 lt	29.7 gal
Engine oil	11.5 lt	2.5 gal
Coolant	15 lt	3.3 gal
Hydraulic oil	150 lt	33 gal
Forks: Floating forks	length 1200 mm	3ft 9 in.
Section	130 x 50 mm	5 ft 1 in x 2 in
Tyres	400/70 - 20	
	8-hole wheel rim (DIN 70361)	
Weight	9,900 kg	21,825 lbs

## Genie Industries

### GENIE AUSTRALIA

591 Boundary Road, Darra Qld 4076  
PO Box 394, Richlands Qld 4077  
Telephone **07 3375 1660**  
Toll Free in Australia **1800 331 660**  
Fax 07 3375 1002  
<http://www.genieindustries.com>

### GENIE UNITED STATES

18340 NE 76th Street  
PO. Box 97030  
Redmond, Washington 98073-9730  
Telephone **(425) 881-1800**  
Toll Free in USA/Canada **800-536-1800**  
Fax (425) 883-3475  
<http://www.genieindustries.com>